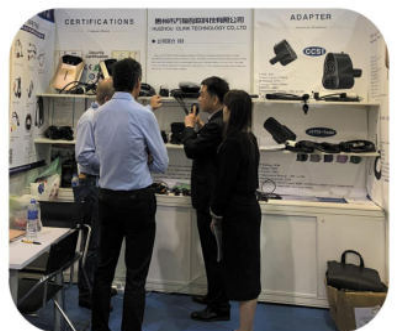






CHARGERMAN

Company Honors





About Us



Olink is an IATF16949 & IPC620 certified manufacturer who focus on trouble-shooting technology in EV supply equipment and connection industry for more than 10 years. We position us as extreme demand solution provider for EVSE, which mean Olink extremely focus on products quality, performance, affordable, delivery, one-stop solution, after-sales service. Our products range from EV adapters, EV chargers both AC and DCFC, EV charger connectors and inlets. All our products are with CE, ETL, UL, FCC and RoHS compliance.

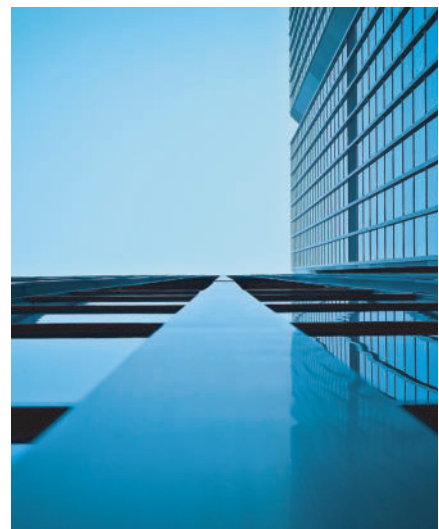
As the first company in the world who issue the 3rd party 200 kilowatts CCS1-Tesla adapter, Olink has been the leader on EV charger adapter to release 20 more new EV charging products each year, bring charging freedom for both Tesla and Non-Tesla EV car owners. With professional Lab and R&D department, Olink continue providing customers with speedy stable and safety EV charging equipment such as GB/T, CCS1, CCS2, NACS, J1772, Type 2 and the related connectors and inlets. Our professional R&D team, enthusiastic service team ensure all customers satisfy with our customized ODM, OEM demands. Contact us to get sharp advantage on EVSE products.

EV charger includes:

AC chargers and DC chargers, ccs1 charger, ccs2 charger, tesla charger, NACS charger, NACS inlets level 2 charger, level 3 charger, mode 2 charger, mode 3 charger, DCFC

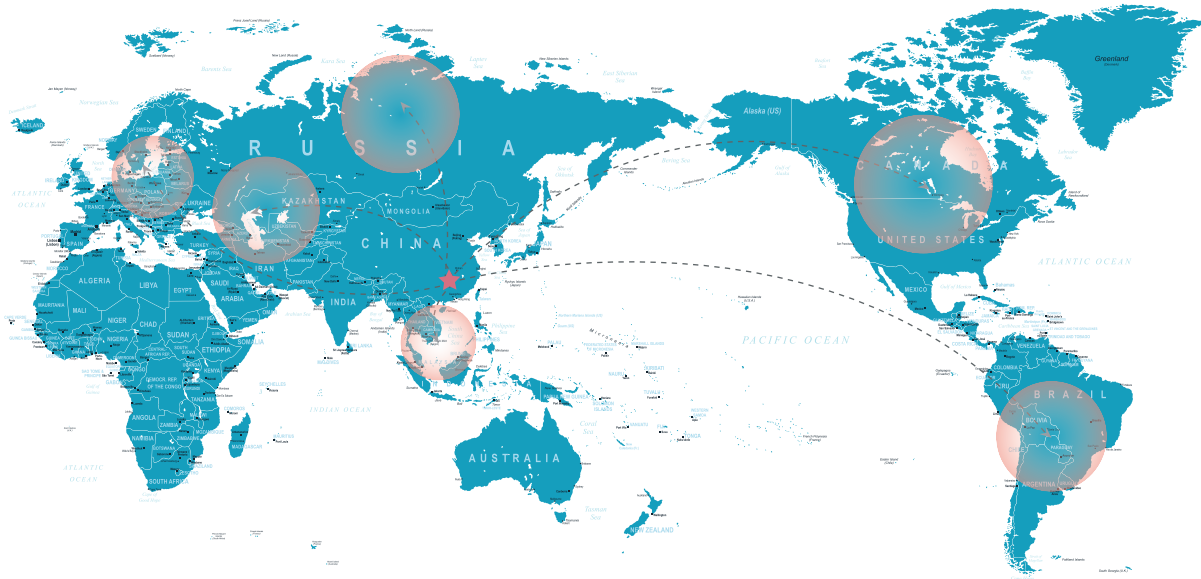
EV adapters includes:

CCS1- TESLA, TESLA- CCS1, J1772- TESLA, TESLA- J1772, J1772- TYPE 2, TYPE 2- J1772, J1772- GBT, TYPE 2- GBT, CCS2- TYPE 2, CCS1- CCS2, CCS2- CCS1, CCS1- GBT, CCS2- GBT, GBT- CCS1, GBT- CCS2, TESLA- CCS2, CCS2- TESLA, TYPE 2- TESLA, TESLA- TYPE 2, J1772 V2L DISCHARGE, TYPE 2 V2L DISCHARGE, GBT V2L DISCHARGE





Our Markets



- **Production Market**

Since 2010, our electric vehicle charging solutions have helped thousands of forward-thinking businesses around the world adopt electric mobility and achieve their goals. By 2023, our customers and partners will have helped us install one million charging ports to make transport cleaner and more accessible.

- **Our Service**

As charging needs evolve, we'll continue providing the infrastructure and expertise needed to adopt electric mobility—along with all the support to keep customers happy and vehicles on the move. Working together, we can shape a sustainable future of transportation that's better for everyone.



CHARGERMAN

EV CHARGER ADAPTER:



CCS2 To CCS1



CCS2 To Tesla



CCS2 To Tesla
(With lock)



CCS2 To Tesla
(DC+AC)



CCS2 To GBT



TTYPE 2 V2L



CCS2 To TYPE 2



TYPE 2 To GBT



TYPE 2 TO J1772



TYPE 2 TO TESLA
(AC SINGLE PHASE)



TYPE 2 TO TESLA
(AC THREE PHASE)



TYPE 2 TO TESLA
(SUPERCHARGER)



CHARGERMAN

CCS2 To CCS1 Adapter

Type: European Standard to American Standard DC + AC combination adapter

Main markets: Europe, Russia, Southeast Asia



Product specifications

Specifications	Parameter
Power	Max 250kw
Current	Up to 250A max
Rated voltage	1000V/ DC
Plug lifespan	>10000 times
Protection class	IP54
Certification	CE FCC
Warranty	12 months
Weight	950 grams (33.51 ounces)
Working temperature	-30°C~50°C



Output port
CCS 2



Input port
CCS 1

CCS2 TO CCS1 ADAPTER



- ▶ **01** Rated Power: 50- 250kw
- ▶ **02** Rated Current: 50-250A Max
- ▶ **03** Operating Voltage:300-1000V DC



CE FCC

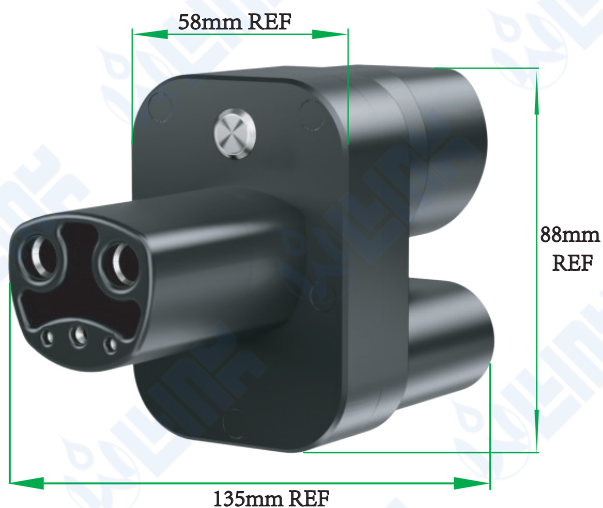


CCS2 To Tesla Adapter

Type: European standard to US Tesla DC adapter

Main markets: Europe, Russia, Southeast Asia

We designed a switch to distinguish the use of new and old cars. By default, it is applicable to old cars before 2020, and press the button it is applicable to new cars after 2020.



Output port
TESLA



Plug lifespan
CCS2

Product specifications

Specifications	Parameter
Power	Max 250kw
Current	Up to 250A max
Rated voltage	1000V/ DC
Plug lifespan	>10000 times
Protection class	IP54
Certification	CE FCC
Warranty	12 months
Weight	950 grams (33.51 ounces)
Working temperature	-30°C~50°C
Compatible with US Tesla with CCS ENABLE.	

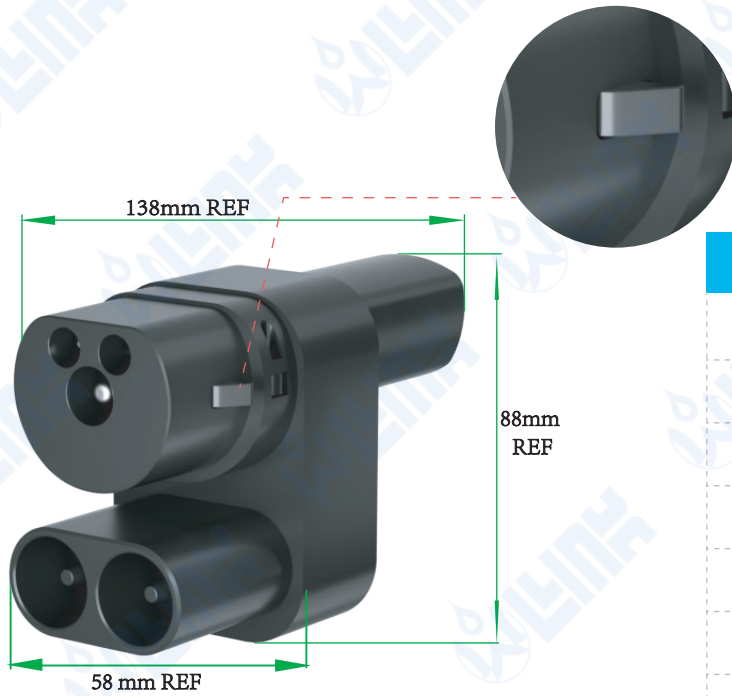




CCS2 To Tesla Adapter With lock

Type: European standard to US Tesla DC adapter

Main markets: Europe, Russia, Southeast Asia



Product specifications	
Specifications	Parameter
Power	Max 250kw
Current	Up to 250A max
Rated voltage	1000V/ DC
Plug lifespan	>10000 times
Protection class	IP54
Certification	CE FCC
Warranty	12 months
Weight	950 grams (33.51 ounces)
Working temperature	-30°C ~50°C
Compatible with US Tesla with CCS ENABLE.	



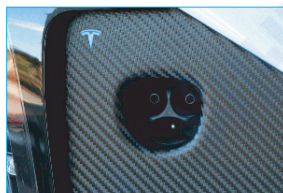
Output port
TESLA



Plug lifespan
CCS2



CCS2 Charger Side



Tesla Car Side





CCS2 To Tesla DC+AC Adapter

Special Feature: DC + AC In One

Main markets: Europe, Russia, Southeast Asia



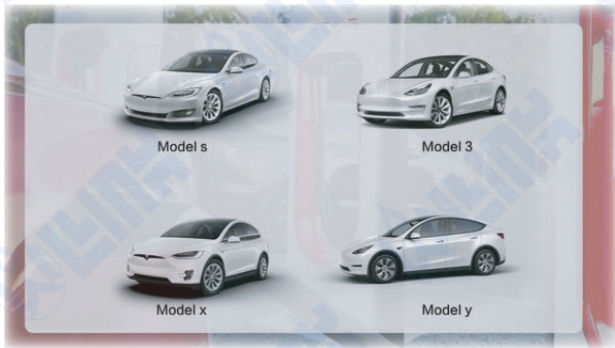
Output port
TESLA



Plug lifespan
CCS 2 + TYPE 2

Product specifications

Specifications	Parameter
Power	Max 250kw
Current	Up to 250A max
Rated voltage	1000V/ DC
Plug lifespan	>10000 times
Protection class	IP54
Certification	CE FCC
Warranty	12 months
Weight	950 grams (33.51 ounces)
Working temperature	-30°C ~50°C
CCS2: Compatible with US Tesla with CCS ENABLE	
TYPE2: Compatible with All US Tesla	





CCS2 To GBT Adapter

Type: Euro to GB DC adapter

Main Markets: Europe, Middle East, Southeast Asia, South America



Product specifications

Specifications	Parameter
Power	200kw
Current	Up to 200A max
Rated voltage	100~950V/ DC
Plug lifespan	>10000 times
Protection class	IP54
Certification	CE FCC
Warranty	12 months
Weight	3600 grams (1299 ounces)
Working temperature	-30°C~50°C
Compatible with All DC GBT Car	



Output port
GBT



Input port
CCS 2



GBT/ DC Plug Car Side



CCS2 Charging Side



COMBO 2 plug insert to adapter COMBO 2 inlet



Type2 V2L Adapter

Type. For Europe

Discharging Power is defined by EV



Type2 Car Side



Universal Socket



Product specifications

Specifications	Parameter
Power	Max 3kw
Current	Up to 16A max
Rated voltage	220V/ DC
Plug lifespan	>10000 times
Protection class	IP54
Certification	CE FCC
Warranty	12 months
Weight	15 grams (0.53 ounces)
Working temperature	-30°C~50°C
outdoor camping, power cut, additional battery for solar system, etc.	





CCS2 To Type2 Adapter

Type: Old Euro EV electric vehicle charging at new power station

Main Markets: West European



Product specifications

Specifications	Parameter
Power	Max 86kw
Current	Up to 210A max
Rated voltage	300~500V/ DC
Plug lifespan	>10000 times
Protection class	IP54
Certification	CE FCC
Warranty	12 months
Weight	880 grams (31.04 ounces)
Working temperature	-30°C ~50°C
Compatible with Tesla Model S, Model X	



Output port
TYPE 2



Input port
CCS2



Type2 Car Side



CCS2 Charger Side





Type2 To GBT Adapter

Type: European Standard to GBT AC Standard

Main markets: Europe、Middle East、Southeast Asia、South America、Central Asia



Product specifications

Specifications	Parameter
Power	Max 7kw
Current	Up to 32A max
Rated voltage	220V/ AC
Plug lifespan	>10000 times
Protection class	IP54
Certification	CE FCC
Warranty	12 months
Housing material	plastic
Working temperature	-30°C~50°C
Compatible With All GBT EV	



Output port
GBT



Plug lifespan
TYPE 2



Type2 Charger Side



GBT Car Charger Side



TYPE 2 TO J1772 Adapter

Type: European standard to America standard AC adapter

Main markets: Eastern Europe



Product specifications

Specifications	Parameter
Power	Max 7kw
Current	Up to 32A max
Rated voltage	250V/ AC
Plug lifespan	>10000 times
Protection class	IP54
Certification	CE FCC
Warranty	12 months
Plastic	PC+ABS
Working temperature	-30°C~50°C
Compatible with US standard J1772 plug automotive	



Output port
J1772



Plug lifespan
TYPE 2



Compatible with



Hyundai Ioniq 5 (American standard J1772 plug)



Mini Cooper SE



Ford Mustang Mach-E



Porsche Taycan



Tesla Model X



TYPE 2 TO TESLA (AC SINGLE PHASE)

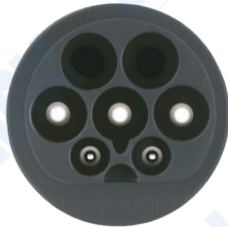
Type: Euro to TESLA AC single-phase adapter

Main Markets: Europe、Middle East、Southeast Asia、South America、Central Asia



Output port

TESLA



Input port

TYPE 2 (AC)
Single Phase

Product specifications

Specifications	Parameter
Power	Max 8 kw
Current	Up to 32A max
Rated voltage	110~250V/ AC
Plug lifespan	>10000 times
Protection class	IP54
Certification	CE FCC
Warranty	12 months
Plastic	PC+ABS
Working temperature	-30°C~50°C
Compatible with All US Tesla AC Charging	

COMPATIBLE WITH



Tesla Model 3



Tesla Model S



Tesla Model Y



Tesla Model X



CHARGE WITH EASE

Built with premium-grade materials and exceptional precision to easily fit Tesla charging ports without damaging the entries.



TYPE 2 TO TESLA (SUPERCHARGER)

Type: European standard to US TESLA DC Standard

Main Markets: Europe、Middle East、Southeast Asia、South America、Central Asia



Product specifications

Specifications	Parameter
Power	Max 100 kw
Current	Up to 250A max
Rated voltage	500V/ DC
Plug lifespan	>10000 times
Protection class	IP54
Certification	CE FCC
Warranty	12 months
Plastic	PC+ABS
Working temperature	-30°C~50°C

DC adapters that can only be used at Tesla Supercharger stations.



Output port

TESLA



Input port

TYPE 2 (DC)

COMPATIBLE WITH



Tesla Model 3



Tesla Model S



Tesla Model Y



Tesla Model X



CHARGE WITH EASE

Built with premium-grade materials and exceptional precision to easily fit Tesla charging ports without damaging the entries.



CHARGERMAN

NON-ADAPTER CATAGORY



TYPE 2 to TYPE 2 EV
Extension Charging Cable



TYPE 2 WALL CHARGER
WITH CABLE & GUN



TYPE 2 Socket Wall
Box EV Charger



TYPE 2 Portable EV Charger



Bidirectional Charge
Extension Cable



CCS2 GUN
WITH CABLE



CCS1 GUN
WITH CABLE



CHARGERMAN

Type 2 to Type 2 Ev Extension Cord

Compatible with Type 2 charging cables

Main markets: Eastern Europe



Product specifications

Specifications	Parameter
Operational Voltage	250V (1 Phase) / 480V (3 Phases) AC
Current	16A, 32A, 48A, 63A
Length	5m/6m/12m (16.4ft/19.7ft/39.4ft)
Frequency	50/60Hz
Protection class	IP54
Certification	CE TUV
Warranty	12 months
Plastic	PC+ABS
Working temperature	-30°C~50°C
Compatible With All EU EV	



Output port
TYPE 2



Plug lifespan
TYPE 2



Connect To EV Charging Station



Cable length can be customized



Connect To Electric Vehicle



TYPE 2 EXTENSION CABLE
5M/6M/12M CUSTOMIZATION



CHARGERMAN

TYPE 2 WALL CHARGER WITH GUN LINE

Type Designation: 7KW - MODE2/ EV AC Charger



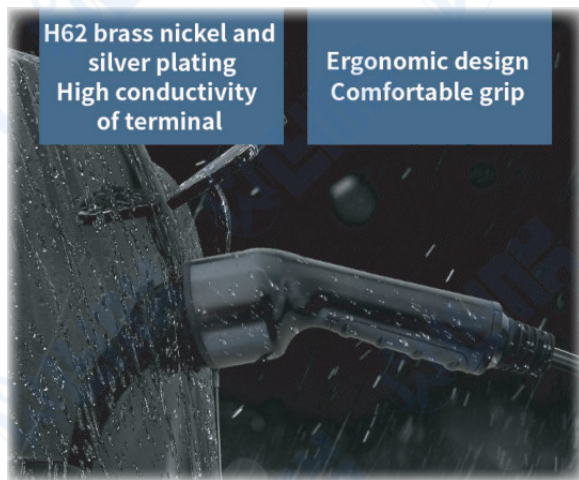
Product specifications

Specifications	Parameter
Power	7.5kw
Current	32A (Single Phase)
Length	6m/12m (19.7ft/39.4ft)
Frequency	50/60Hz
Protection class	IP54
Certification	CE TUV
Warranty	12 months
Operational Voltage	230V (Single Phase)
Working temperature	-30°C~50°C
Compatible With All EU EV	

Output port
TYPE 2

H62 brass nickel and silver plating
High conductivity of terminal

Ergonomic design
Comfortable grip





CHARGERMAN

TYPE 2 Socket Wall Box EV Charger

TYPE2 MODE3 EV CHARGER 7KW With TYPE2 EXTENSION CABLE



Product specifications

Specifications	Parameter
Power	7kw
Current	32A (Single Phase)
RCD Protection	Type A + 6mA DC
Frequency	50/60Hz
Protection class	IP54
Certification	CE TUV
Warranty	12 months
Operational Voltage	230V (Single Phase)
Working temperature	-30°C ~50°C
Standby Power Consumption	5W
Compatible With All EU EV	

Type2 Extension Cable





TYPE 2 Portable EV Charger

**Rated power:
3.5Kw/7Kw**



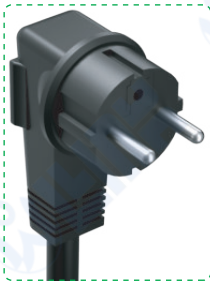
Product specifications	
Specifications	Parameter
Rated power	3.5Kw/7Kw
Current	32A (Single Phase)
RCD Protection	Type A + 6mA DC
Frequency	50/60Hz
Protection class	IP54
Certification	CE TUV
Warranty	12 months
Operational Voltage	230V (Single Phase)
Working temperature	-30°C~50°C
Standby Power Consumption	5W
Compatible With All EU EV	



TYPE 2 plug



Cable Wires



Single-phase plug

**TYPE 2 MODE 2
EV CHARGER**


 Lightning Protection


 Leakage Protection


 Over Current Protection


 Over Voltage Protection





CCS1 GUN WITH CABLE



Product specifications

Specifications	Parameter
Max Charging Power	250KW
Rated Current	200A/250A
Operation voltage	1000V/ DC
working length	20 Ft/6 m; 40 Ft/12m
Protection class	IP54
Certification	CE TUV
Warranty	12 months
Plastic	PC+ABS
Working temperature	-30°C~50°C

FEATUGES OF PLUG

Suitable for most new energy vehicles, ergonomic design, comfortable grip, easy to pull and plug

INTEGRATED PLUG

The intergrated plug is designed to be mor e rugged and even could resist the rolling and crash of the car. IP54 ensure the perfect work outdoors in any environment including rain and snow



WORKING TEMPERATURE

The plugs have a thermoplastic shell and pins made of silver - plated copper alloy. It can be used normally between -30 C and 50 C



ARCING DESIGN

Owing to the special design, pins could be automatically cleaned during each plug - in process to ensure that no arcing occurs during use.





CHARGERMAN

CCS2 GUN WITH CABLE



Product specifications

Specifications	Parameter
Power	Max 250kw
Rated Current	200A /250A
Operation voltage	1000V/ DC
working length	20 Ft/6 m; 40 Ft/12m
Protection class	IP54
Certification	CE TUV
Warranty	12 months
Plastic	PC+ABS
Working temperature	-30°C~50°C



Nice Appearance

Hand - Held Ergonomic Design

Easy Plug

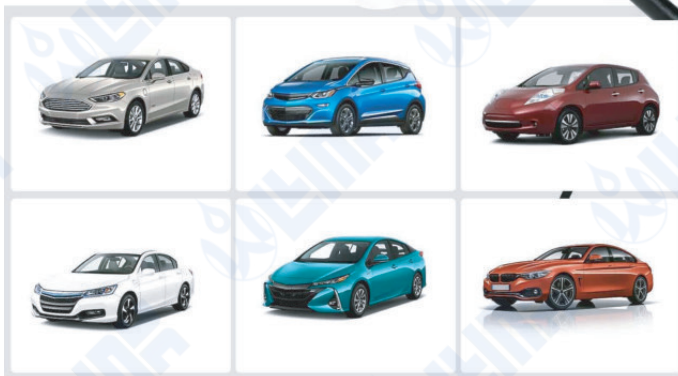
Super Compatible CHARGING GUN

Compatible with all electric vehicles with J1772 connector



Reliable material:

flame retardant, pressure resistance, abrasion resistance, high oil resistance





INNOVATION ON DEMANDS

Olink Technology R&D team is a group of high qualified, energy and creative experts, equipped with advanced lab.

We set off to survive on quality and develop with innovation, increase new products developing to meet with market changes. Base on meet with safety requirement, we combine with economic efficiency and social responsibility during new products designing. Olink Technology always focus on customer satisfaction by continuously enhance quality management so as to surpass the peers both in home and abroad.



Product develop process >>>>>





Huizhou Olink Technology Co.,LTD

惠州市万物互联科技有限公司

Add: 7/F,8/F, Building 27, Zhongnan Hi-Tech Innovation Park,Huizhou,GD,China

Tel: +86-13725088886

Zip: 516057

Email: sales@olinkvse.com

Web: www.olinkvse.com